

***Joue ! Joue !***

# ***BREVET 1er cycle***

*Livret à l'usage des classes de  
FM et d'instruments*

# BREVET 1er cycle

Tonalités Majeures et mineures jusqu'à 4# et 4 b  
 Clefs utilisées : clé de sol, clé de fa, clé d'ut 3ème

## BINAIRE

Mesures 2 3 4 4 4 4 2 2 3 4  
 4 4 4 4 2 2 2

## TERNAIRE

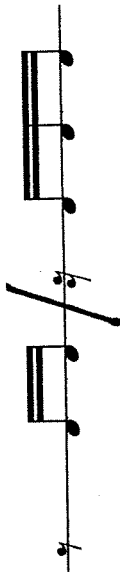
Mesures 3 6 9 12  
 8 8 8 8

\*\*\*\*\*

Page 1



Page 2



Page 3



Page 4



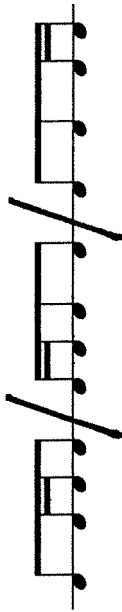
Page 5



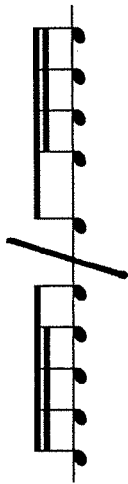
Page 6

4 2 2 3 2 4

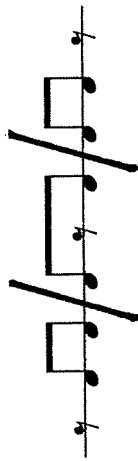
Page 7



Page 8



Page 9



Page 10



## CONSIGNES

Les exercices peuvent être parlés, chantés, frappés, joués à l'instrument sur une note, un accord parfait, une gamme ou une mélodie dans les tonalités du programme en terminant toujours par la tonique.

Pour chaque cellule rythmique :

Deux exercices (A,B) façon Batucada (le professeur d'instrument commence pour montrer l'exemple à l'élève qui, à la reprise, lui répond et /ou possibilité aussi de faire 2 groupes d'élève(s) qui se répondent)

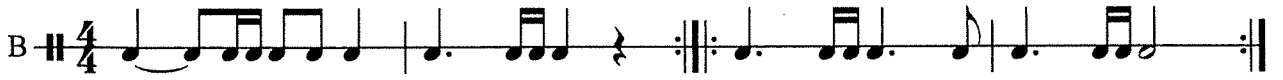
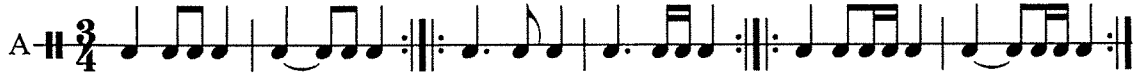
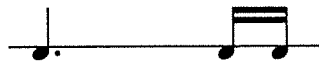
Un canon

Un duo

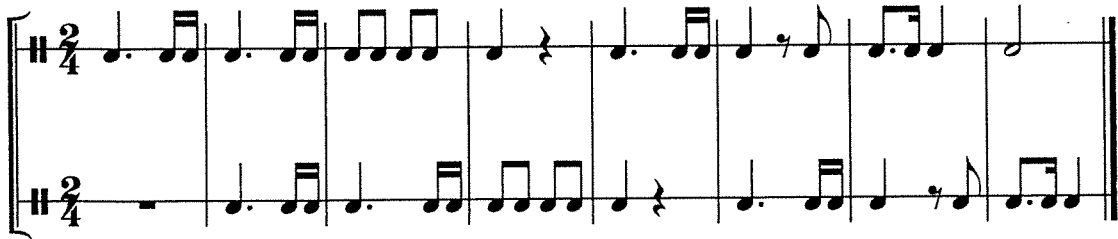
Un ou deux rondos

Il n'y a volontairement aucune indication de phrasés, de nuances, de tempi... Libre au professeur d'instrument d'en rajouter et d'adapter ces exercices à l'élève en fonction de son niveau instrumental. Soyez créatifs !!! Vous pouvez aussi faire un travail d'articulations, de coups d'archet... L'important est de s'amuser avec « Joue, joue » !!!

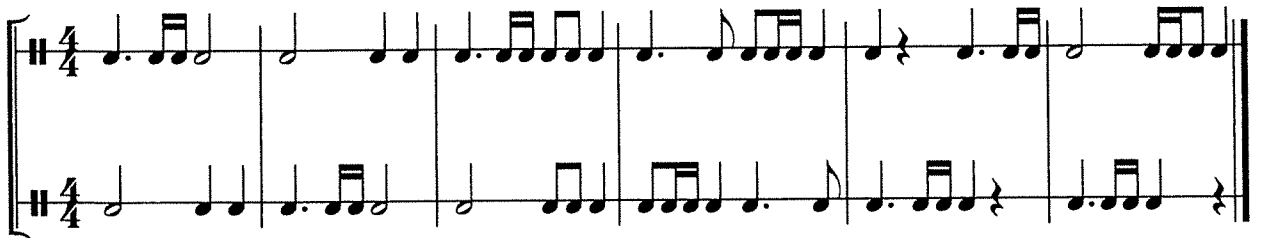
Martine Tournier  
*Septembre 2014*



Canon

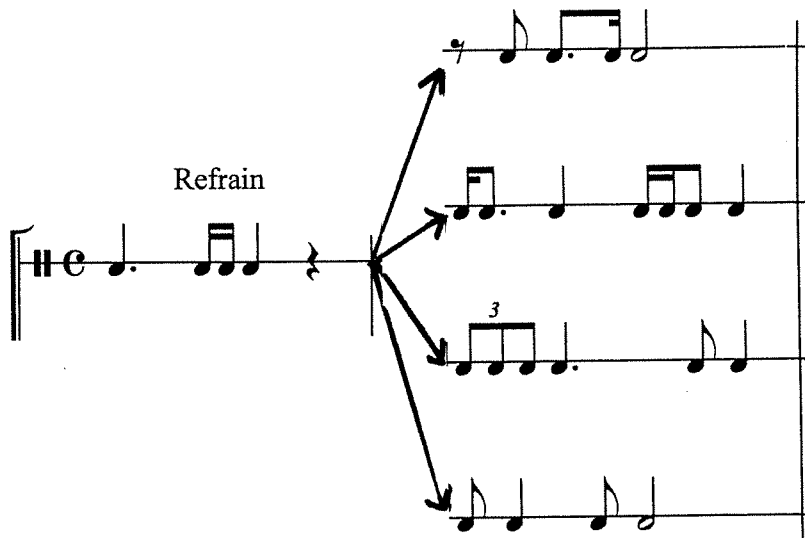


Duo



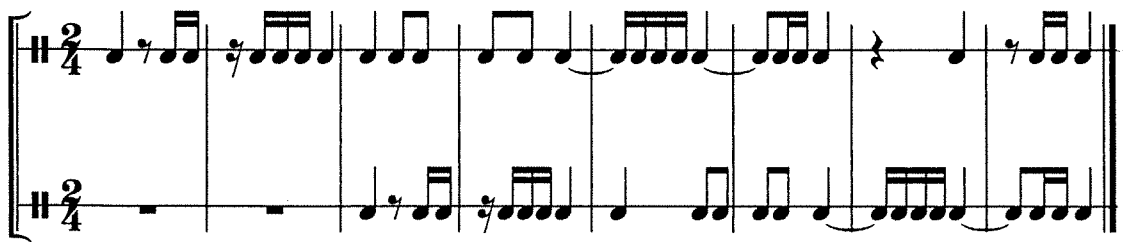
Couplets

Rondo

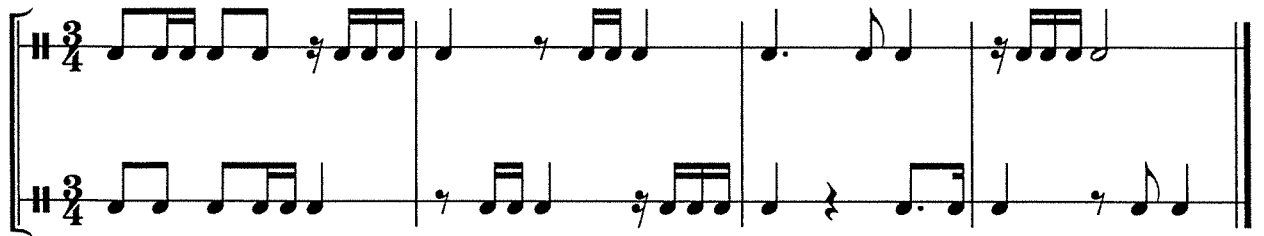




Canon

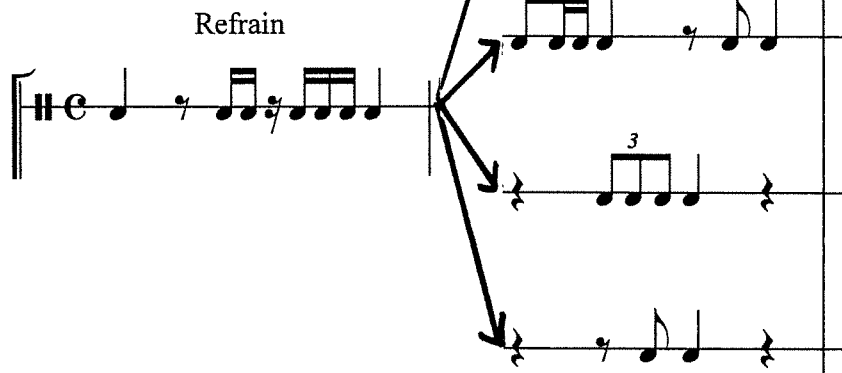


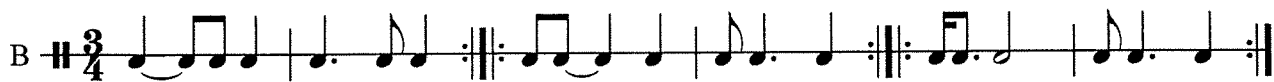
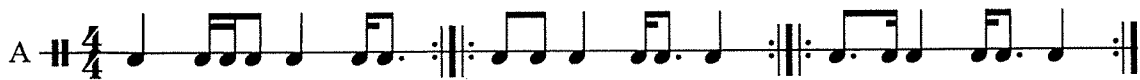
Duo



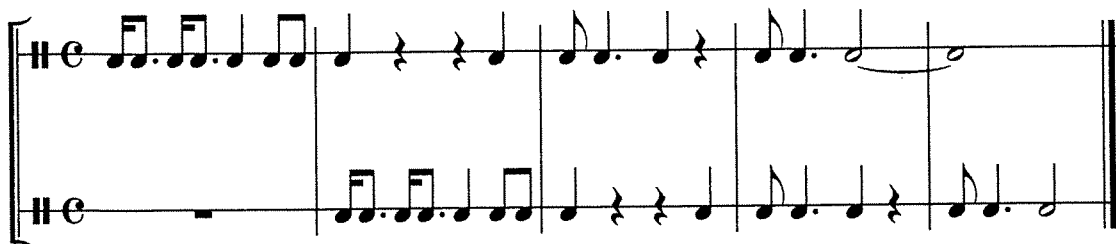
Couplets

Rondo

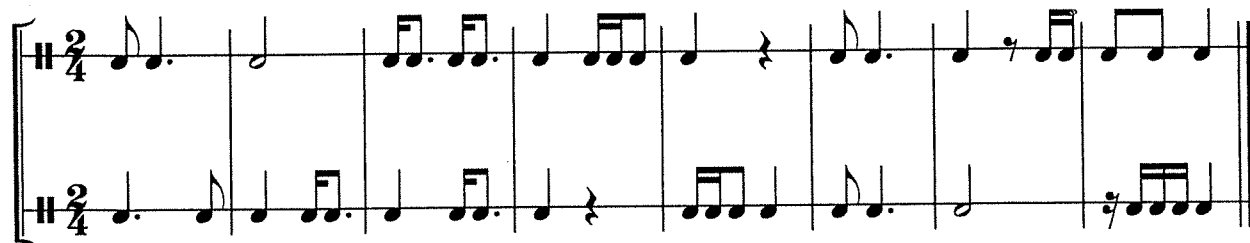




Canon

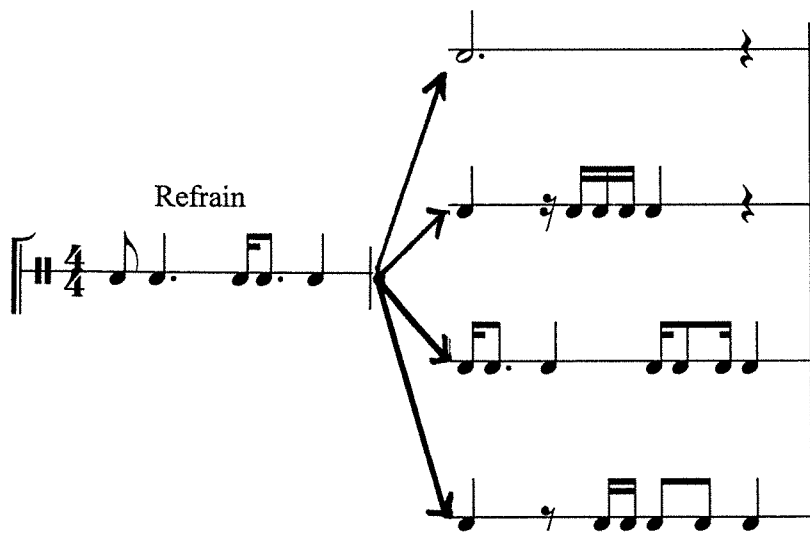


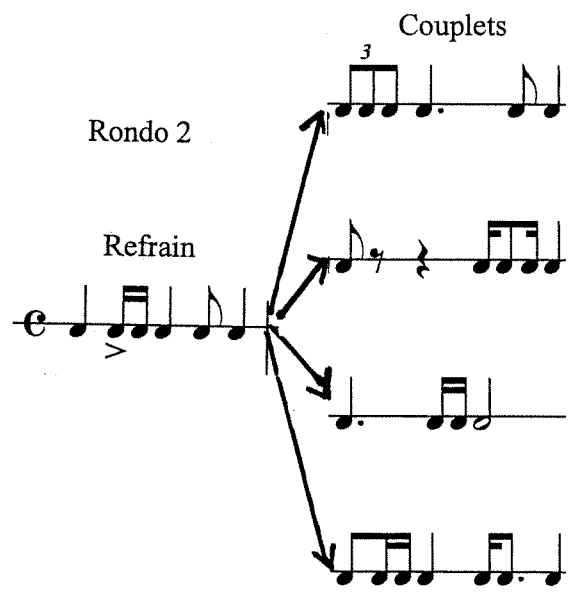
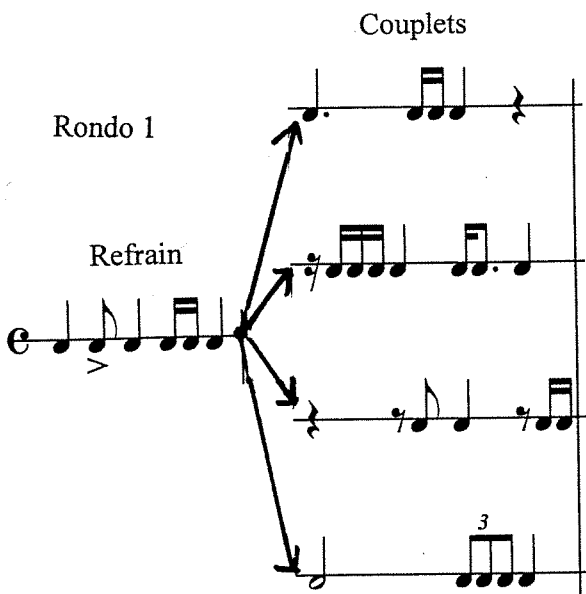
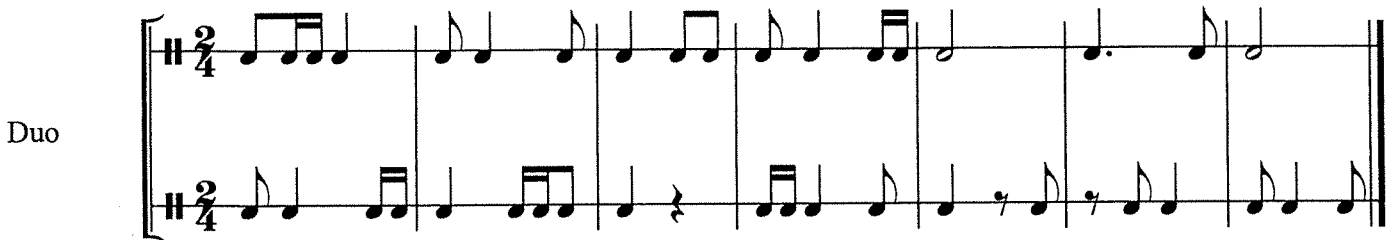
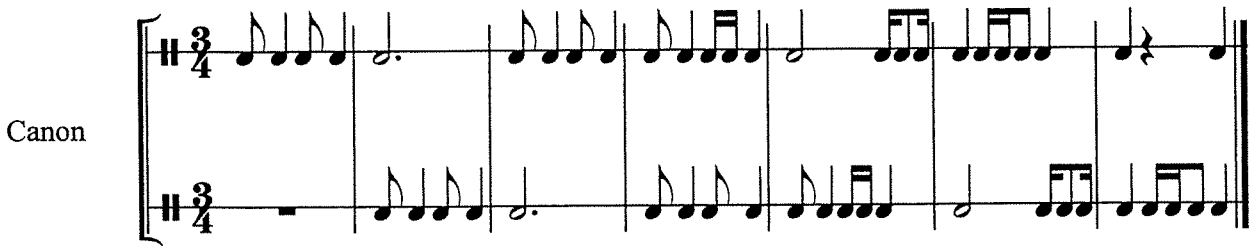
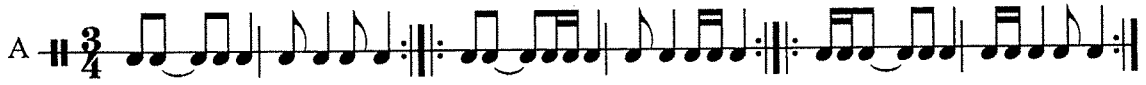
Duo

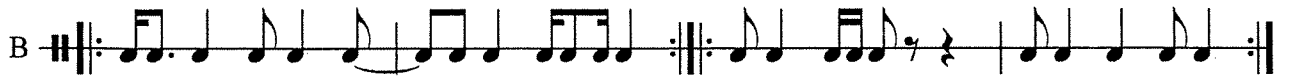
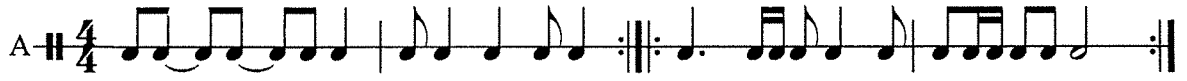


Couplets

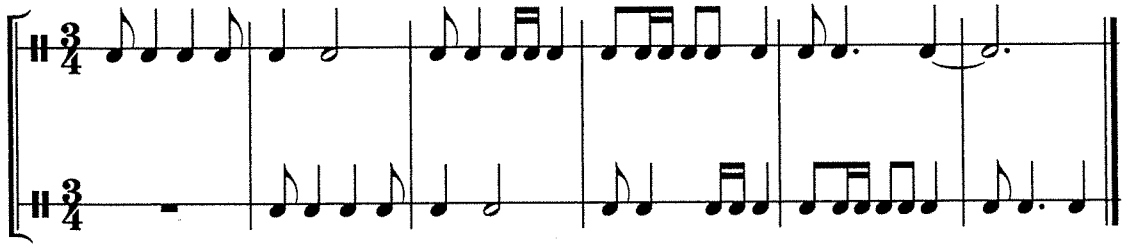
Rondo



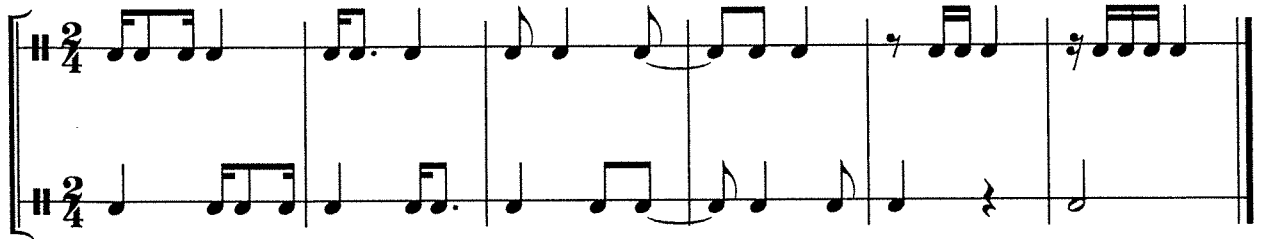




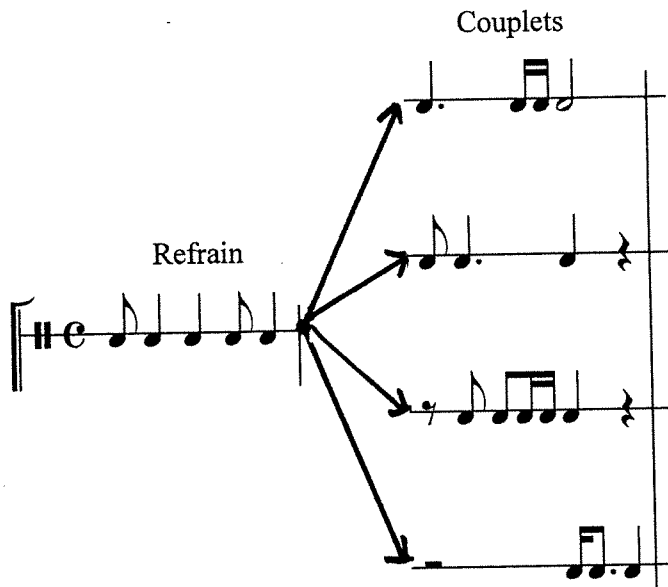
Canon



Duo



Rondo





MESURES à  $\phi$   $\frac{2}{2}$   $\frac{3}{2}$   $\frac{4}{2}$

A

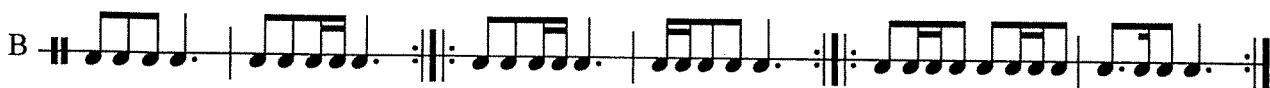
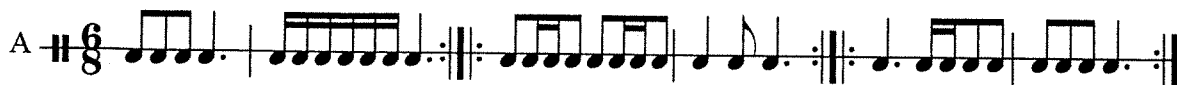
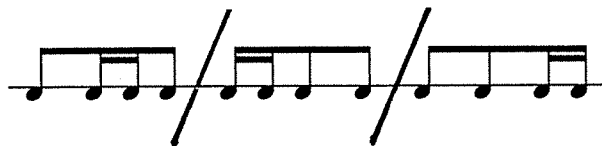
B

Canon

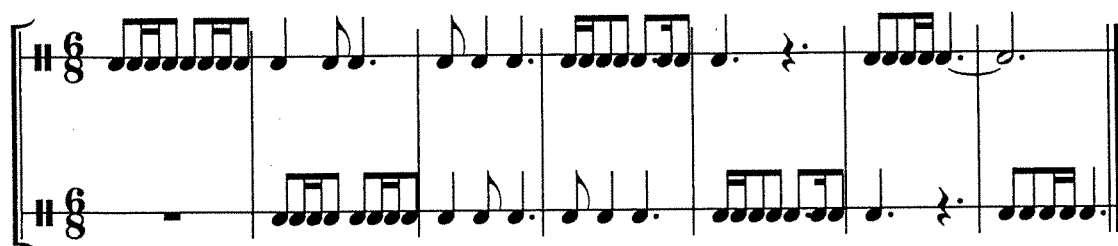
Duo

Rondo 1

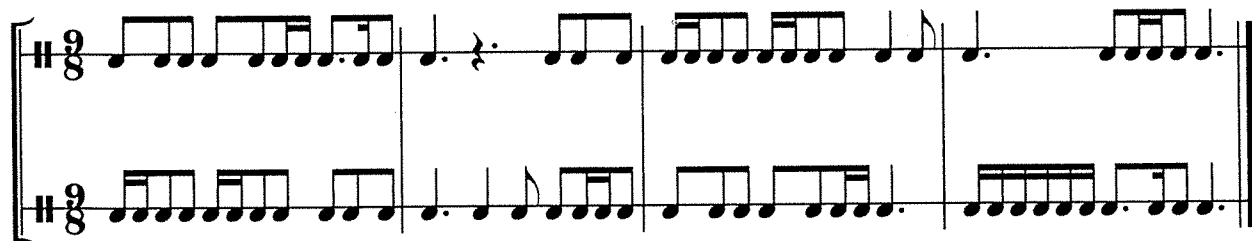
Rondo 2



Canon



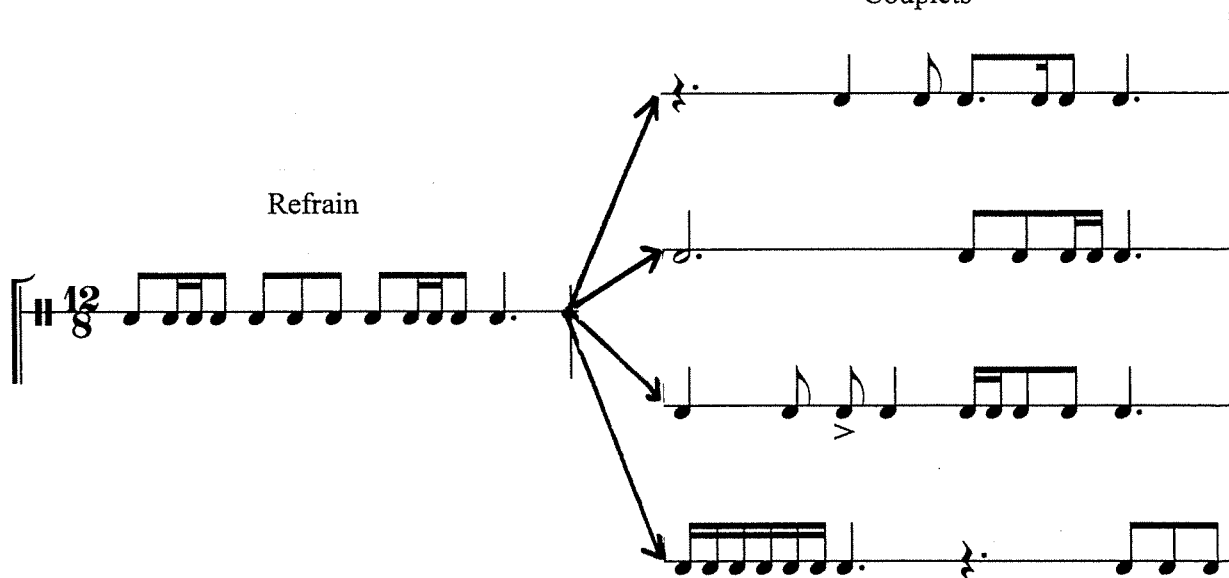
Duo

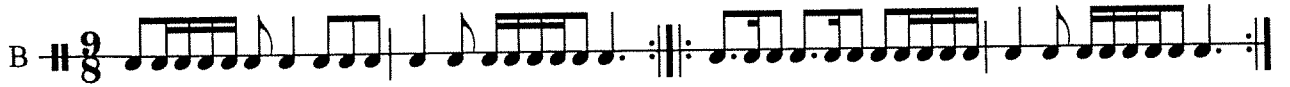
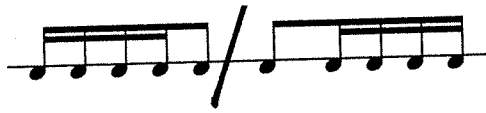


Couplets

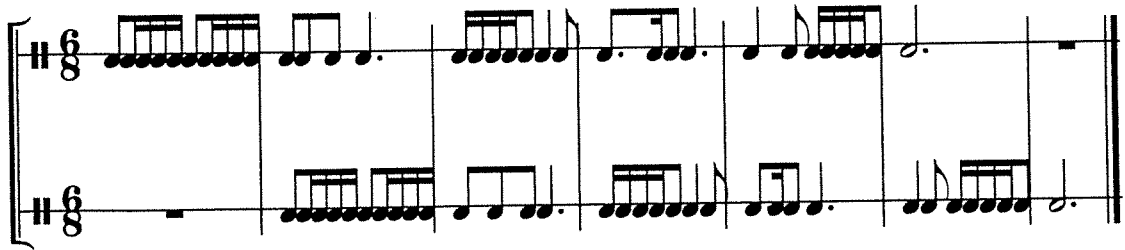
Refrain

Rondo

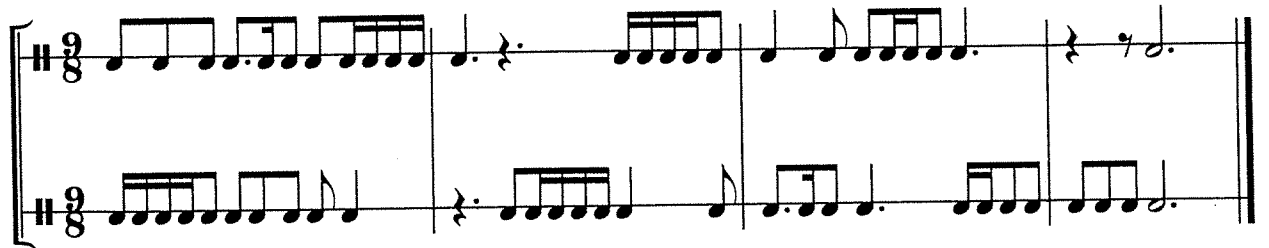




Canon



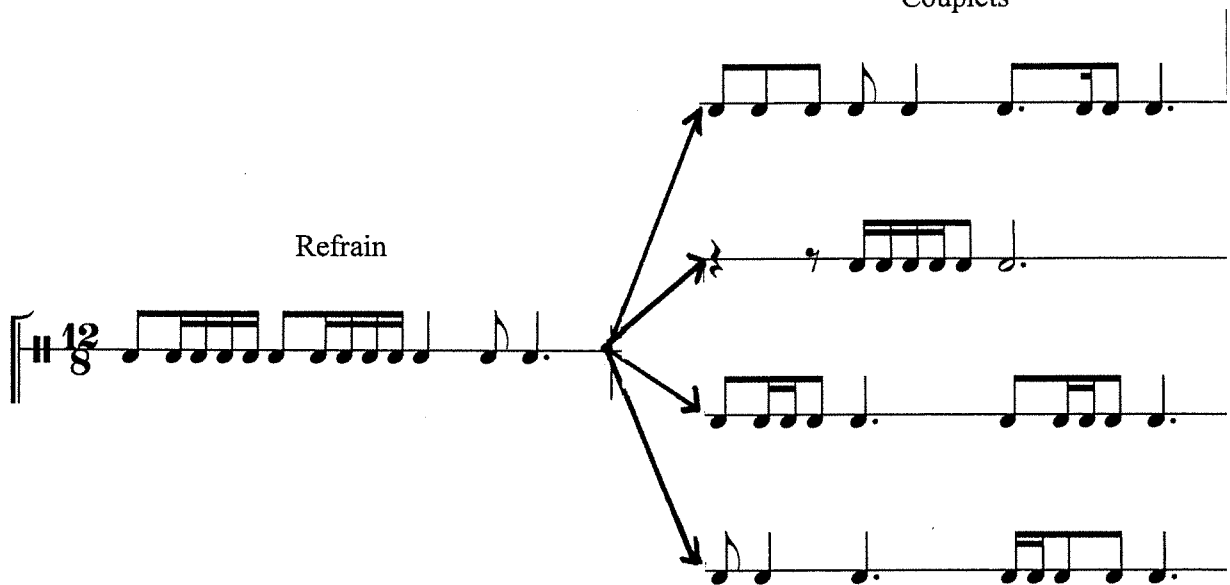
Duo

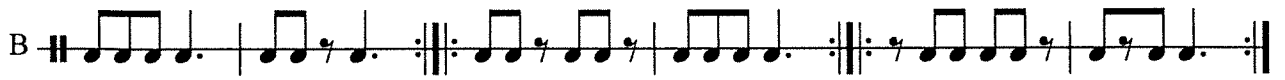
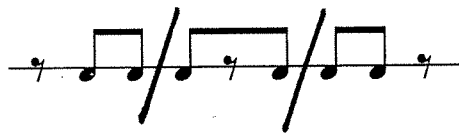


Couplets

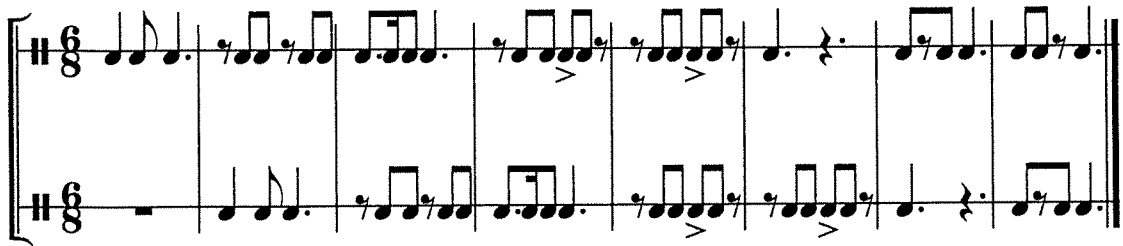
Refrain

Rondo

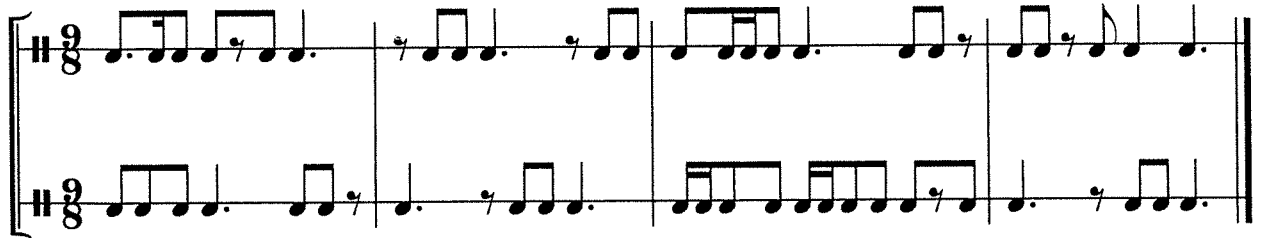




Canon

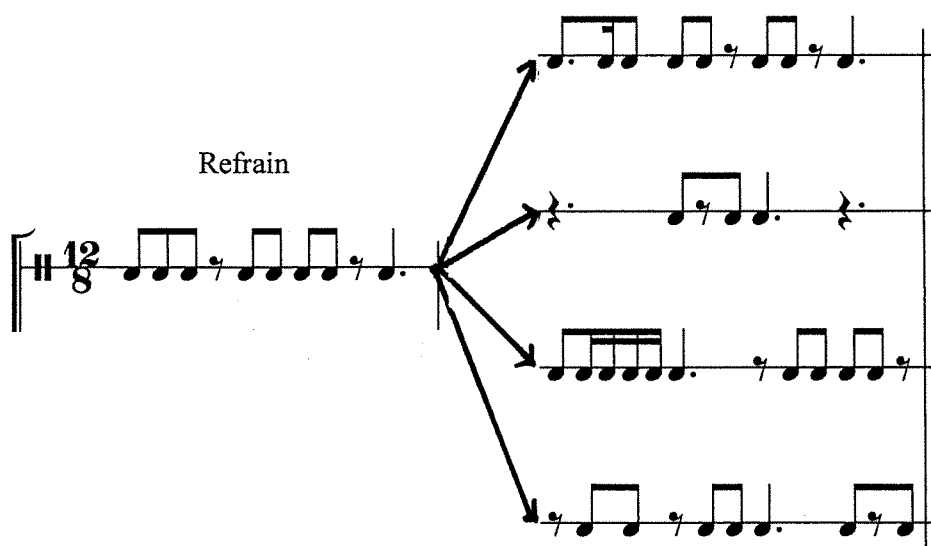


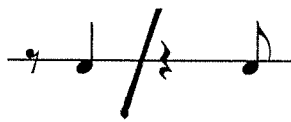
Duo



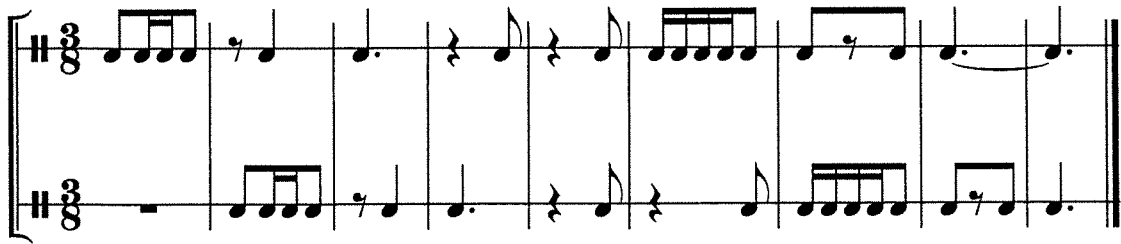
Couplets

Rondo





Canon

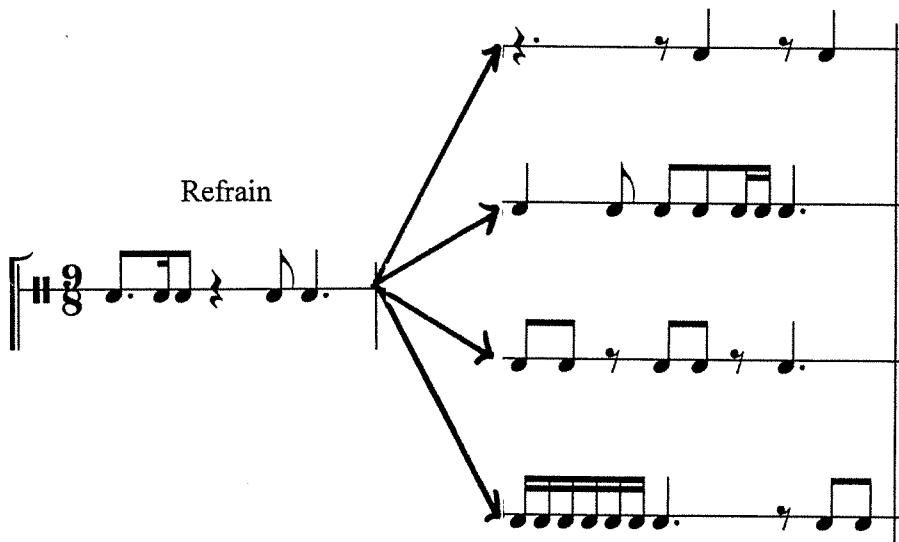


Duo



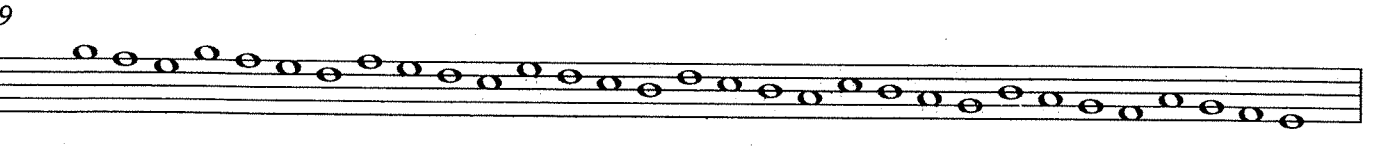
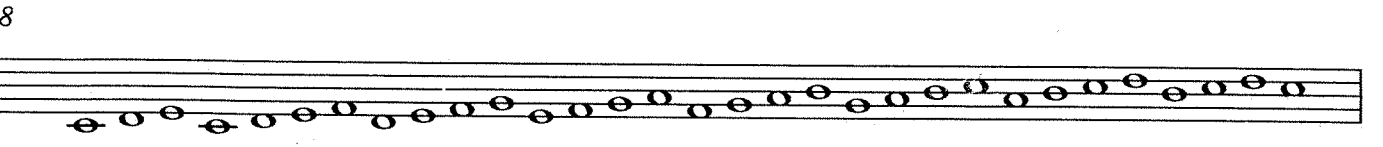
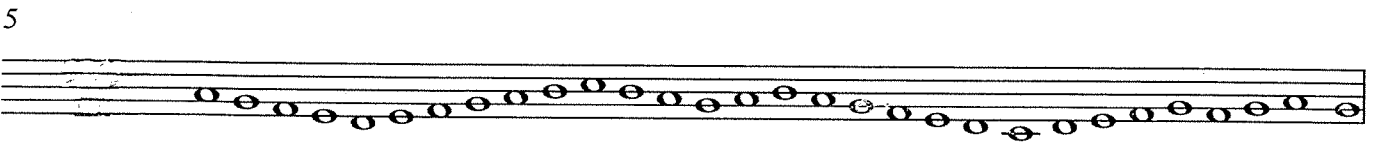
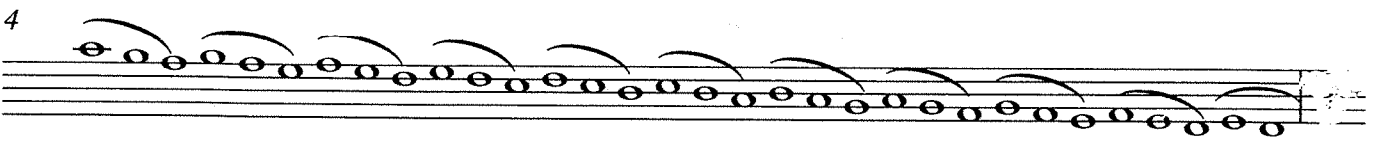
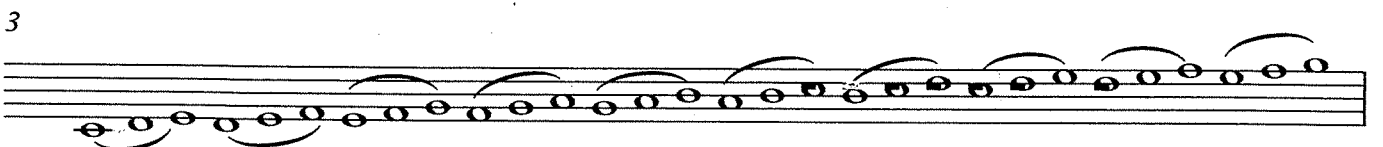
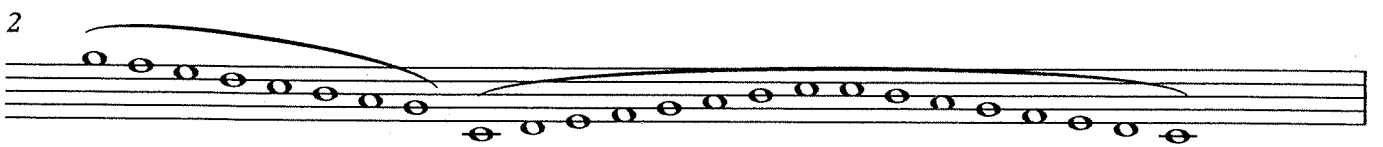
Couplets

Rondo



# LECTURE DE NOTES

CHOISIR LA NOTE DE DÉPART



11



12



13



14



15



16



17



18



19



20



21





22




23



24



25



do do do do do do do

26



27



28



29



30



31



32

